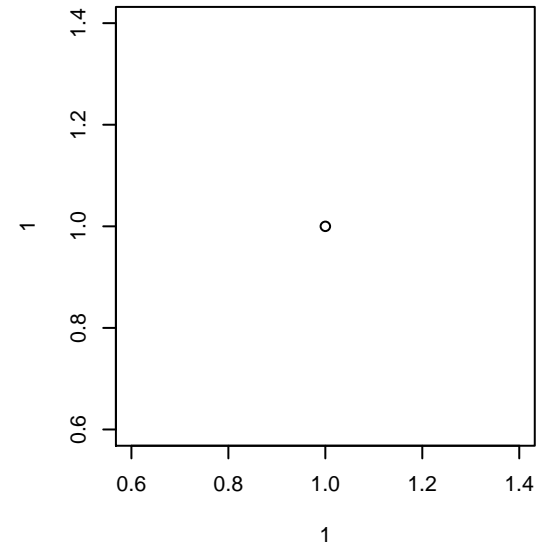


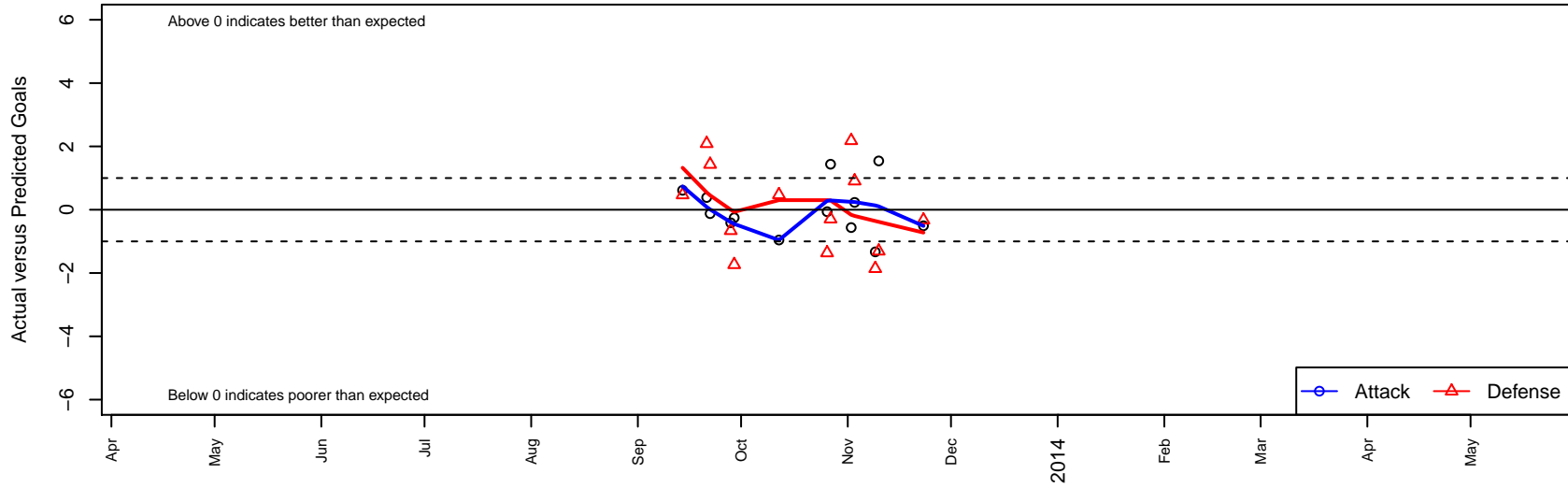
Arsenal FC Pre-Academy B00

, CAS
 B00 total strength=1287
 attack=7.17 defense=4.08
 fall league = SCDL FI1 U13
 alt names used:
 Arsenal FC BU13 Pre Academy

Venues played:
 SCDL FI1 U13



Arsenal FC Pre-Academy B00
 Dots are actual minus expected GF (blue circles) and GA (red triangles).
 Blue line is smoothed change in attack strength. Red is smoothed change in defense strength.



	date	home		away		venue	pred.home	pred.away
19178	2013-11-23	Downtown SC White B00	2	Arsenal FC Pre-Academy B00	1	SCDL F11 U13	1.67	1.51
18078	2013-11-10	Los Angeles Futbol Academy Red B00	4	Arsenal FC Pre-Academy B00	3	SCDL F11 U13	2.69	1.46
17803	2013-11-09	Beach FC B00	3	Arsenal FC Pre-Academy B00	1	SCDL F11 U13	1.14	2.33
17276	2013-11-03	Arsenal FC Pre-Academy B00	4	CZ Elite B00	0	SCDL F11 U13	3.77	0.91
16854	2013-11-02	Arsenal FC Pre-Academy B00	0	FC Golden State Academy B00	2	SCDL F11 U13	0.56	4.18
16258	2013-10-27	Arsenal FC Pre-Academy B00	4	Roadrunner United FC B00	1	SCDL F11 U13	2.56	0.71
15978	2013-10-26	Arsenal FC Pre-Academy B00	1	LA Galaxy South Bay Gold B00	3	SCDL F11 U13	1.06	1.64
13997	2013-10-12	Real So Cal White B00	1	Arsenal FC Pre-Academy B00	0	SCDL F11 U13	1.47	0.96
12363	2013-09-29	Arsenal FC Pre-Academy B00	2	FRAM Premier B00	3	SCDL F11 U13	2.25	1.26
12026	2013-09-28	Santa Barbara SC White B00	3	Arsenal FC Pre-Academy B00	1	SCDL F11 U13	2.34	1.41
11435	2013-09-22	Arsenal FC Pre-Academy B00	1	Strikers FC Cerritos B00	1	SCDL F11 U13	1.12	2.43
11080	2013-09-21	Strikers FC South Coast B00	0	Arsenal FC Pre-Academy B00	2	SCDL F11 U13	2.09	1.61
10110	2013-09-14	Strikers FC Whittier B00	1	Arsenal FC Pre-Academy B00	3	SCDL F11 U13	1.47	2.39